

# Chairmans Report

April 2018 - March 2019



# The Annual Report from the Friends of Telford Town Park April 2018 - March 2019

Telford's Fiftieth Anniversary year kicked off to a good start with our unique Sakura Festival which was in my last years report. After such a successful event, how could we better it? Well we had a go and the following are some of the happenings that the Friends were involved in or played a big part in securing.

- Sporteering with a prize ceremony at Xscape in Ketley.
- We launched our Memory Leaf scheme for the public to purchase a stainless steel leaf and have it engraved and permanently hung in the Friends Sensory Garden within the Chelsea Gardens
- The Teddy Bears Picnic in the QE2 Arena
- We joined the Telford & Wrekin Council Lottery scheme (TWINCL) to give us some regular income
- We held a Sakura Party at the Holiday Inn for all those who had helped at our unique festival in April
- Attended the Senior Citizens Forum to promote the Friends
- Constructed a Karesansui (Zen) Garden in the Maxell Cherry Garden
- Built and installed a wooden seat in the woodland walk in the Maxell Garden
- Attended the launch of the Disc Golf on the Village Green in the Park
- Instrumental in securing the resurfacing of all the paths in the Chelsea and Maxell Gardens
- Helped with a Community planting day to brighten up the entrance to the Chelsea Gardens
- Attended the Japanese Garden Society's first two day conference at Japan House in London
- Helped with a litter pick for the Council for the Preservation of Rural England in the Town Park

- Held our annual Fancy Dress Fun Run in December raising £2,500 for the Midlands Air Ambulance
- Some members attended a Bee Keeping course ready for the two new hives to be installed this year
- We painted a corridor in the Visitor Centre and donated and put up 8 new pictures and frames
- Obtained a metal Gorilla for seven months loan for the gardens from the British Ironwork Centre, Oswestry
- Worked with Telford College of Arts and Technology in the formal gardens
- Improved the Friends Sensory Garden by planting sedum round the bubble fountain
- Installed a small wooden protective barrier in front of the water lily water feature
- Of course our regular work in the formal gardens continues every Wednesday and some Saturdays
- Will be attending St Georges in the Park at the end of April with garden tours and bug house making
- We are now looking forward to working with HSBC bank in May and other commercial concerns
- Working on plans to improve the Japanese style Maxell Cherry Gardens

Sadly we lost two members, one last year, Rong Whitehead and one recently, our founder and honorary life member Joan Noel.

As always I would like to thank Nicola the Park Manager and her staff, Telford & Wrekin Council and the Southwater Event Group for their continued support and several Town and Parish Councils around Telford, without whom we could not function and of course all the other supporters from the general public.

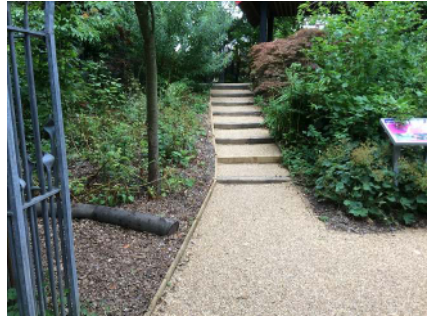
I look forward to the next 12 months full of excitement and enthusiasm.

**Chris Pettman, April 2019.**

[www.friendsoftelfordtownpark.org](http://www.friendsoftelfordtownpark.org)



Newly planted corner



A part of the new paths



The Memory Leaf scheme with hanging leaves



JGS Conference, London



A new seat in the Maxell Garden